

# ■ People Counter sensor with USB



## People Counter sensor with USB

### Applications:

#### Horizontal technique;

At entrances  
At '(AM) shoplifting gates'  
Behind glass

- Easy installation
- Extreme low power
- Standard wide opening capability up to 8m / 26ft
- Battery lifetime 1 year
- ENI®: Enhanced Noise Immunity (DSP Technology)
- Secure download of data to USB memory stick
- Storage for over a month of minutely data
- Internal time / date
- CSV file format for Micorsoft Excel® via SensorServer

[www.SDInternational.nl](http://www.SDInternational.nl)

# People Counter sensor with USB

## People Counter sensor with USB

The counter sensors of SDI stand out in simple installation, extreme low power and standard wide opening capability of up to 8m or 26ft. Simple AA Alkaline batteries last even up to 1 year! This counter is very useful for generating minutely data. Data can be downloaded to the SensorServer using a standard USB stick or connecting to a pc using a USB cable.

Just like the display version and the network version of the counter sensors the USB version can make distinction in in-and outgoing persons by using the bi-directional version. By means of advanced techniques and protocols, it is possible to detect the direction of the person walk through the horizontal beam. Both numbers are available in the SensorServer. The SDI people counter sensors are designed to count people, hands and fingers are not counted.

The bi-directional counter sensors are equipped with Enhanced Noise Immunity®. This ENI® is based on DSP technology. It filters out infrared and electrical disturbance from e.g. ir door openers or AM anti shoplifting systems.

## Applications

In particular very suitable to be placed at entrances. Shoulder- / chest-height is the ideal height to count people. Fixing on the 'AM) shoplifting gates' is a good option.

Horizontal technique;

Counter works through glass.

## Summary

Versatile battery powered counter sensor, used where no network is available and detailed valuable data is needed.

Can also be mounted on (AM) shoplifting systems.

## Specifications

Bi-Directional USB People Counter (PRx20U2 – PTx20-1)

Data Memory : 40 days of minutely data

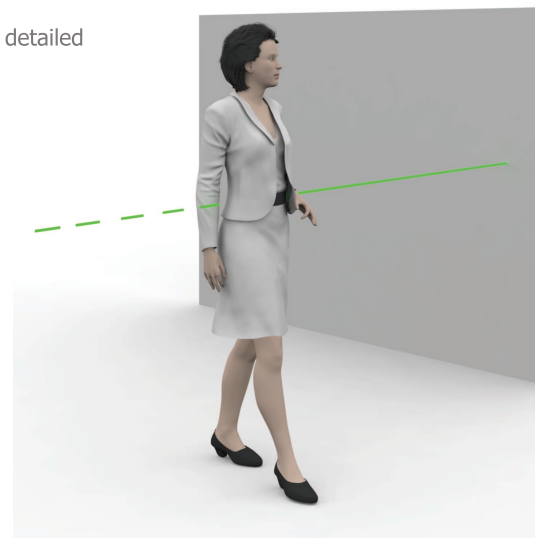
Measurement Width : 8 meter

Power Supply : 1.5V Alkaline batteries

Battery Life : 1 year

Internal date and time with battery backup

Dimensions : 116.4 x 70 x 26.5 mm



[www.SDIInternational.nl](http://www.SDIInternational.nl)